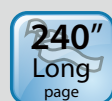
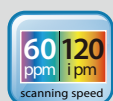




## A Fast, and Affordable Scanner



### Features:

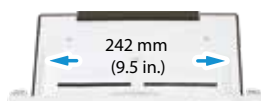
- A Duplex Scanner Suited for Passport, Booklet (up to thickness of 7 mm), Document and Cards
- Fast, 60 ppm/120 ipm scanning in color, (200 dpi)
- Fast, 45 ppm/90 ipm scanning in color, grayscale and monochrome (300 dpi,)
- Support form paper up to 242 x 356 mm (9.5 x 14 in.)
- Daily duty cycle up to 10,000 sheets
- Robust 100-page automatic document feeder (80 g/m<sup>2</sup>, 20 lb.)
- Reverse roller technology delivers outstanding feeding reliability
- Hard and embossed card scanning up to 1.25 mm in thickness in portrait or landscape feeding
- Press and scan to cloud servers via the bundled software Button Manager V2
- Earth-friendly LED technology
- Long page scanning: 5540 mm (218" ) (<300 dpi, simplex)/6096 mm (240" ) (<200 dpi)

### Overview

The AD545G is a 60 page-per-minute, duplex scanner that is fast, reliable, and affordable for business where scanning plastic ID cards, business cards, documents or other heavy card stock is necessary.

### Support form document up to 242 x 356 mm (9.5 x 14 in.)

The AD545G boasts a unique and innovative design in comparison with its predecessors - the ability to accommodate form document up to 242 x 356 mm (9.5 x 14 in.). The extended document width from standard 216 mm (8.5 in.) to 242 mm (9.5 in.) makes the AD545G more competitive to fit for a wider range of documents.



### Color, and Graphical LCD Display

The AD545G is easy to use through the LCD display and buttons on the panel. By selecting your destination and pressing the "Scan" button, the scan can be done and the scanned image can be sent to your specified destination application such as e-mail, printer, or your favorable image-editing software application. Up to nine frequently used scan settings and destinations can be preset for different scanning needs.

1	iScan(Image)
2	iScan(OCR)
3	Scan To App
4	E-Mail
5	Printer

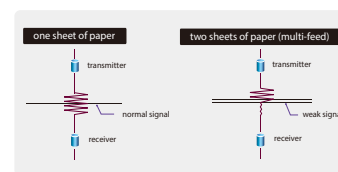
### Reverse Roller Enhances Feeding Reliability

Designed with the innovative reverse roller for advanced paper separation capability, the AD545G delivers outstanding feeding reliability and operating productivity by effectively reducing the risk of a multi-feed or paper jam.



### Ultrasonic Multi-Feed Detection

With the ultrasonic multi-feed detection capability, the scanner allows you to set overlapped paper by detecting paper thickness between documents. The ultrasonic function can be turned off when scanning document with labels, sticky notes, or taped receipts. This innovative design prevents double feeding and effectively scans documents of different weights or thickness.



### A Duplex Scanner Suited for Passport, Booklet, Document and Cards

Thanks to the advanced straight paper path and image processing technology, documents including passport, and booklet (up to thickness of 7 mm) with varies sizes and weights can be scanned, appropriately cropped, deskewed, and ready to use. Scan size accepts paper from receipts (2 x 2 in.) to business document (8.5 x 14 in.). The auto document feeder is also robust enough to feed paper up to 413 g/m<sup>2</sup> (110 lbs) and embossed hard cards such as ID cards, credit cards, driver's license, and health insurance card up to 1.25mm in thickness.

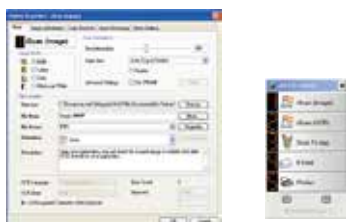
### What We Have Bundled

The AD545G comes with TWAIN and ISIS drivers, and are bundled with a suite of powerful software applications that include Avison Button Manager V2, AVScan X and Nuance PaperPort SE 14.

## Avision | AD545G Sheetfed Scanner

## Avision's Button Manager V2

- Completes your scan with a single step



The Button Manager V2 main screen

Button Manager V2 makes it easy for you to scan and send your image to your favorite destinations with a press one button. Now the new version comes with an innovative feature to let you scan and automatically upload the scanned document to popular cloud repositories such as Google Docs, Microsoft SharePoint, or FTP. In addition, the iScan feature allows you to insert the scanned image or recognized text after optional OCR (Optical Character Recognition) process to your text editor such as Microsoft Word to get your job done easily and quickly.

## AVScan X

## -The Intelligent Document Management Tool



The AVScan X main screen

Document Imaging is the very first step of Document Management. However, poor quality images can cause serious problems to later indexing or storing processes. It may increase scanning labor costs and lowers the OCR accuracy. AVScan X ensures all documents are checked and polished at the time they are scanned such that the image quality is guaranteed before they are ready to use for other purposes. AVScan X is an intelligent scanning and electronic filing solution. AVScan X possesses distinct features that convert and index scanned information into electronic documents for easy storage and fast retrieval.

## Nuance PaperPort SE14

- The Professional Choice to Organize and Share Your Documents



The PaperPort SE14 main screen

PaperPort SE 14 is Nuance's most popular scanning and document management solution, carefully designed specifically for home office use. Part traditional file cabinet, part digital-document desktop, PaperPort SE 14 is the fastest and easiest way to scan, share, search and organize your documents. Additionally, PaperPort SE 14 now delivers anytime-anywhere access to your most important files however it's convenient for you – using a PC, Mac, iPhone, iPad, or Android device.



PAPERPORT SE 14



Avision  
*Button Manager V2*

AVScan X



## Avision AD545G Product Specifications

Paper Feeding:	ADF 100-page capacity
Scanning Technology:	CMOS-CIS
Light Source:	LED
ID card thickness:	Up to 1.25 mm
Booklet:	Up to 7mm thick
Long Page Mode:	200 dpi: 6096 mm (240 in.) 300 dpi: 5540 mm (218 in.) 600 dpi: 1500 mm (59 in.)
Scanning Size:	Max. 216 x 356 mm ( 8.5 x 14 in. ) (Paper width up to 242 mm (9.5")) Min. 50 x 50 mm ( 2 x 2 in. )
Scanning Speed:	60 PPM/120 IPM (color, A4, 200 dpi) 45 PPM/90 IPM (color, A4, 300 dpi)
Paper Thickness:	27 ~ 413 g/m <sup>2</sup> (7 to 110 lb.)
Optical Resolution:	600 dpi
Output Resolution:	75~1200 dpi
Output Formats:	BMP, PNG, GIF, JPEG, PDF, Searchable PDF
File Formats:	Multi-Page TIFF, TIFF, RTF, TXT, XPS, DOC, XLS, PPT, DOCX, XLSX, PPTX, HTML.
Bundled Software:	Avision Button Manager V2, Avision AVScan X Nuance PaperPort SE 14
Interface/Drivers:	USB3.2 Gen 1x1 / TWAIN , ISIS , WIA
Power Supply:	Input: 100~240 VAC, 50/60 Hz Output: 24V, 2A
Power Consumption:	Operation: <45W Sleep: <2.0 W Ready: <7.0W Off: < 0.3 W
Environmental Factors:	Operating temperature: 10°C to 35°C (50°F to 95°F) Operating humidity: 10% to 85%
Acoustic Noise:	Ready: <45 dB Operating: <60 dB
Dimensions ( W x D x H ):	Max.: 669 x 316 x 257 mm ( 26.3 x 12.4 x 10.1 in ) Min.: 216.3 x 316 x 176 mm (8.5 x 12.4 x 6.9 in.)
Weight:	4.4 kg (9.6 lb.)
Recommended Daily Duty Cycle:	up to 15,000 Sheets
Multi-feed Detection:	Ultrasonic Sensor

We have endeavored to ensure that the information in this manual is accurate and that Avison is not responsible for printing or typographical errors. The above configuration is for reference only. The actual configuration (software, hardware) should be compiled with the specification described in the purchase agreement.

Avison Inc. owns the intellectual property rights of the product outlook and design and the product outlook and design is subject to change. Avison reserves the right to the interpretation of the product outlook and design. Avison Inc. is not responsible for the interpretation of the product outlook and design. Avison Inc. is not responsible for the interpretation of the product outlook and design.

Product is for reference only. Avison did not warrant these products nor is responsible for their efficiency or use of these products.

## System Requirements

CPU: Intel® Core i3 (2.1GHz) or Higher
Memory: 2GB (32bit Windows) 4GB (64bit Windows)
USB: USB3.2 Gen 1x1port
Windows® Operating System:
- Windows® 11,10, 8, 7
Linux Operating System:
- Fedora, openSUSE, Debian, Ubuntu
MAC Operating System:
- macOS10.12~10.15, macOS11 Big Sur, macOS12 Monterey, macOS13 Ventura, macOS14 Sonoma, macOS15 Sequoia

## Contents

Scanner, Power Supply, Quick Guide,  
USB3.2 Gen 1x1 cable

Bundled software:

- Scanner Driver
  - ( \*TWAIN/ISIS / Mac/ \*Linux Driver)
  - \* Avison Button Manager V2
  - \* Avison AVScan X
  - \* Nuance PaperPort SE 14
  - \* [Download and run \[Avison Update\] at   
www.avison.com/install](#)
  - \* [Download and run \[Avison Update\] at   
www.avison.com/download](#)



**Avision**  
www.avision.com