

eScan Open System A3

SHAPE YOUR NEEDS



i2S
be visionary

eScan Open System a scanner compliant with the ISO 19264-1 standard



Backed by many years of experience, the eScan range kept on improving thanks to multiple innovations, enhancing technological performance and image quality over time.

The second generation of eScan range has been designed to satisfy the most demanding end-users, especially in terms of image quality. This search for excellence corresponds to i2S strategy and endeavours. Image quality being at the core of i2S concerns, eScan Open System (with Eagle Camera) is compliant with ISO 19264 standard, Metamorfoze and FADGI image quality guidelines.

eScan Open System is the first scanning solution on the market fully configurable.

eScan Open System, a new scanning solution that is open, configurable and scalable according to user needs, and enhanced with high image quality and productivity. You'll also enjoy its new design, more ergonomic and easy to handle.

Cameras are designed and produced by i2S; these are the result of many years of experience in digital imaging and processing.

eScan range is driven by LIMB Capture software and can be easily connected to i2S LIMB software suite.

It allows managing the entire digitization workflow thanks to LIMB Maestro, enriching images with LIMB Processing, and creating ready to publish images into LIMB Gallery, our digital library solution.

LIMB Software allows to manage your documents workflow in terms of image quality and efficiency.

Some references - They trust our solutions



Compliant with ISO 19264-1, Metamorfoze light and FADGI 3* standards (with EAGLE Camera)

Image Quality

- 71 Mpixels Camera
- No mechanical shutter
- 400 dpi optical resolution on A3+ (up to 600 dpi)
- 9 cm depth of field
- 6,7 lp/mm at 400 dpi (85 % resolution efficiency)
- 5,9 lp/mm at 300 dpi (100 % resolution efficiency)

Lighting

- LED with no direct light to the operator's eyes

Productivity

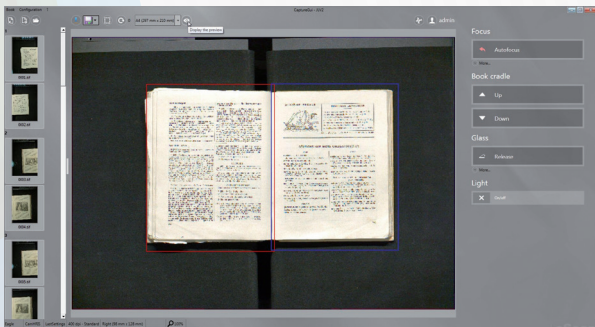
- Scan time < 1 sec / Cycle time < 3 sec at 400 dpi
- Same scanning time whatever the format
- Two interfaces : self-service or production (Limb Capture)
- All-in-one screen or monitor
- Scan launch when glass is down
- Automatic opening when scan is done

Book Cradle

- 15 cm / 15 kg manual book cradle or motorized book cradle with glass plate or no book cradle
- 560 x 400 mm scanning format
- Optional self-opening glass plate



Software



- Color Live preview before scan
- Multi frame management: saving multiple files from one scan
- Automatic format detection
- Auto-focus
- Real-time lighting correction
- Light "On" only during scanning
- Automatic calibration & Fine tune calibration menu
- ICC Profile management
- Multilingual operator interface
- Embedded image processings (live deskew, live cropping, finger masking, details enhancement, contrast enhancement...)

Configurations



EXAMPLES OF WALK-UP CONFIGURATION, KIOSK FOR SELF-SERVICE USE



EXAMPLES OF TABLE TOP CONFIGURATION, TO BE INSTALLED ON YOUR OWN TABLE



EXAMPLE OF WORKING STATION CONFIGURATION, SCANNER'S FEET LIE ON THE FLOOR FOR A SEATED USE

Technical Specifications



<u>Type</u>	A3+ format planetary book scanner
<u>Scan format</u>	up to 560 mm x 400 mm (22"x15,7")
<u>Scan mode</u>	Color, Grayscale, Black & White
<u>Scan time</u>	< 1 sec on A3 + format, 400 dpi in color
<u>Cycle time</u>	< 3 sec on A3+ format, 400 dpi in color, TIFF Files
<u>File formats</u>	TIFF, TIFF (multipage) , JPEG, JPEG2000, BMP, PDF, PDF (multipage), PNG, DNG
<u>Camera</u>	Eagle or E-HRIS / 71 Mpixels matrix sensor camera, auto-focus, no mechanical shutter
<u>Maximum resolution</u>	600 x 600 dpi
<u>Optical resolution</u>	400 x 400 dpi
<u>Scanner interface</u>	USB 3.0
<u>Interface software</u>	LIMB Capture Software, operated by Windows 7, 8, 10 / 64 bits
<u>Dimensions (L x l x h)</u>	Scanner : 1002mm (39,42') x 790mm (31,10") x 1330mm (52,36")
<u>Power requirements</u>	110v – 240v , 50Hz 60Hz
<u>Warranty</u>	1 year on spare parts and software updates, extendable to up to 5 years
<u>Certifications</u>	CE / FCC part 15 conformity Low voltage electrical safety EN60950 radioelectrical disturbances EN55022, EN61000 -3-2, EN61000-3-3 electromagnetic immunity EN55024

About i2S

SOLUTIONS FOR YOUR DIGITIZATION PROJECTS

i2S is a company specialized in image capturing and processing technology.

We work for international clients, on a wide range of markets like: health and well-being, sport, software, document digitization, food-processing and agriculture, aviation and aerospace, robotics and industrial control systems, and more generally, wherever image capturing is required.

i2S creates and markets a whole range of scanners and software intended for historical archives and bound documents digitization and promotion. Most of our customers are content owners such as museums, libraries, archives, administrations and a few large companies.

Our clients value our innovative solutions which encompass the complete process of a digitization project: capturing, processing, enriching and sharing. In order to meet the need for digitizing varied and precious collections, we designed the largest range of book scanners on the marketplace – from the smallest size to 2A0 format, including robot scanners.

Today, more than 4.000 book scanners are installed at more than 1.000 customers' sites around the world.

At i2S we work with passion and dedication for our customers, taking up the challenge of putting innovation at the service of digitization projects efficiency.



i2S Innovative Imag-

@i2SBeVision-

www.i2s.fr

e-mail: contact@i2s-digibook.com

i2S SA - 28-30 rue Jean Perrin 33608 PESSAC – France